

# ENDOLINQ™ Endoscopic CO<sub>2</sub> Insufflator

Product Brochure

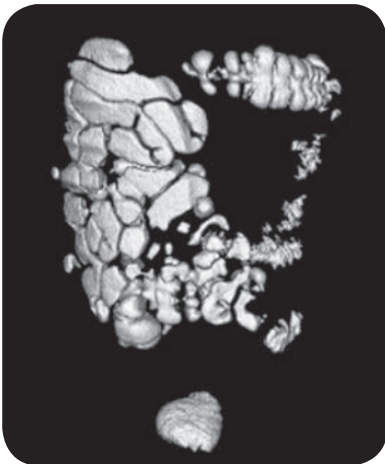


# Overview

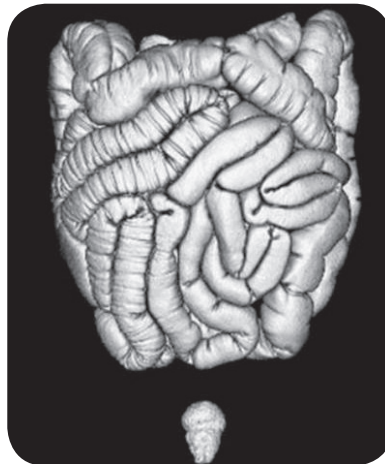
Carbon Dioxide is a more ideal material for insufflation compared to room air, due to its fast absorbing nature.

The implementation of Carbon Dioxide in endoscopic procedures drastically reduces discomfort and abdominal pain, prevents serious complications in the case of perforation.

Carbon Dioxide insufflation



Room air insufflation



Carbon Dioxide significantly reduces gas residue after ESD procedure. (Endoscopy. 2013; 45(5):335-41)

## Patient comfort

Endolinq CO<sub>2</sub> insufflator provides better flow rate and precision control compared to traditional two-stage regulator on CO<sub>2</sub> tank.

## Compact design

The compact enclosure of Endolinq ensures you can place it anywhere, even on trolley that is tightly packed.

## Precision control

- 3-level flow rate
- LED numeric display
- Automatic timed shut-off

## Safety

- Pressure alarm will warn the user and automatically shut down at threshold high or low pressure.
- Flow filtering will stabilize the gas flow and filter out impurity, ensuring a safe and steady environment.

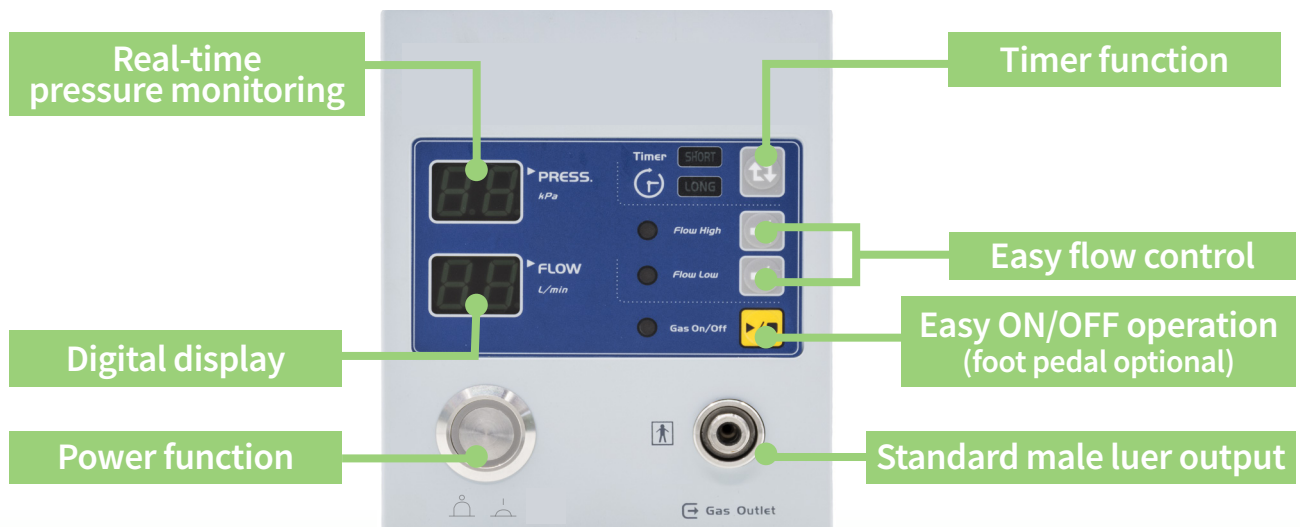
## Compatibility

Endolinq works with all major endoscopy brands.

You can easily set up with adaptors, sterilize them for repeated use or use disposable accessories.

# Accessories

Part NO.	Description	Specifications	Packing
EG-2012	Outlet connector unit		1 / set
EG-2005	CO <sub>2</sub> high-pressure host	M16×1.5-M12×1.5	1 / set
EG-2113	JSQB-PT1 In-line tubing set	Compatible with Pentax water bottle	1 / set
EG-2118	JSQB-OP1 In-line tubing set	Compatible with Olympas water bottle MD-431	1 / set
EG-2114	JSQB-OP2 In-line tubing set	Compatible with Olympas water bottle MAJ-901	1 / set
EG-2115	JSQB-FJ1 In-line tubing set	Compatible with Fujifilms water bottle WT-3	1 / set
EG-2119	JSQB-FJ2 In-line tubing set	Compatible with Fujifilms water bottle WT-4	1 / set
EG-2103	Pressure regulator	Compatible with UK standard BS NO.8	1 / set
EG-2104		Compatible with GER standard DIN477#6	1 / set
EG-2105		Compatible with US standard CGA320	1 / set
EG-2106		Compatible with FR standard NF NO.C	1 / set
EG-2108	Central gas supply unit	US Standard	1 / set
EG-2109		UK Standard	1 / set
EG-2110		FR Standard	1 / set
EG-2111		GER Standard	1 / set



# ENDOLINQ™

## Endoscopic CO<sub>2</sub> Insufflator

### Product Specifications

---

Input and output

**Maximum input pressure:**  
0.9 MPa (after depressurization)

**Output volume:**  
2L/Min (± 0.3L/min)  
3L/Min (± 0.3L/min)

---

Product size  
and weight

**Dimensions:**  
128 mm(W) \* 330 mm(D) \* 155 mm(H)

**Weight:**  
5 Kg

---

Power requirements

**Voltage (AC):** 100-240 V

**Frequency:** 50 Hz

---

Sinomedik B.V., Zeewinde 3-11E, 9738 AM Groningen  
The Netherlands  
+31 (0) 502 110 354, [info@sinomedik.nl](mailto:info@sinomedik.nl), [www.sinomedik.nl](http://www.sinomedik.nl)  
KVK 52753220

