

# Electrosurgery Unit

## JSDD-Q2





## 2-in-1 Electrosurgery Unit with Argon Plasma

Comprehensive, versatile and compact.

A design that harbors all the essential components for your OR regimen: Mono-polar and APC unit, with high efficiency and great affordability.

You can perform wide range of surgeries without the need of additional modules or extensions and save valuable trolley space.

**80,000,000**  
times per second

Is how fast this device detects even the minutest changes in the electrical flow, then calculates and adjust the optimum voltage output for best effects.

### APC Unit Integrated

The built-in Argon Plasma Coagulation unit adopted a highly advanced and intelligent proportional valve control system.

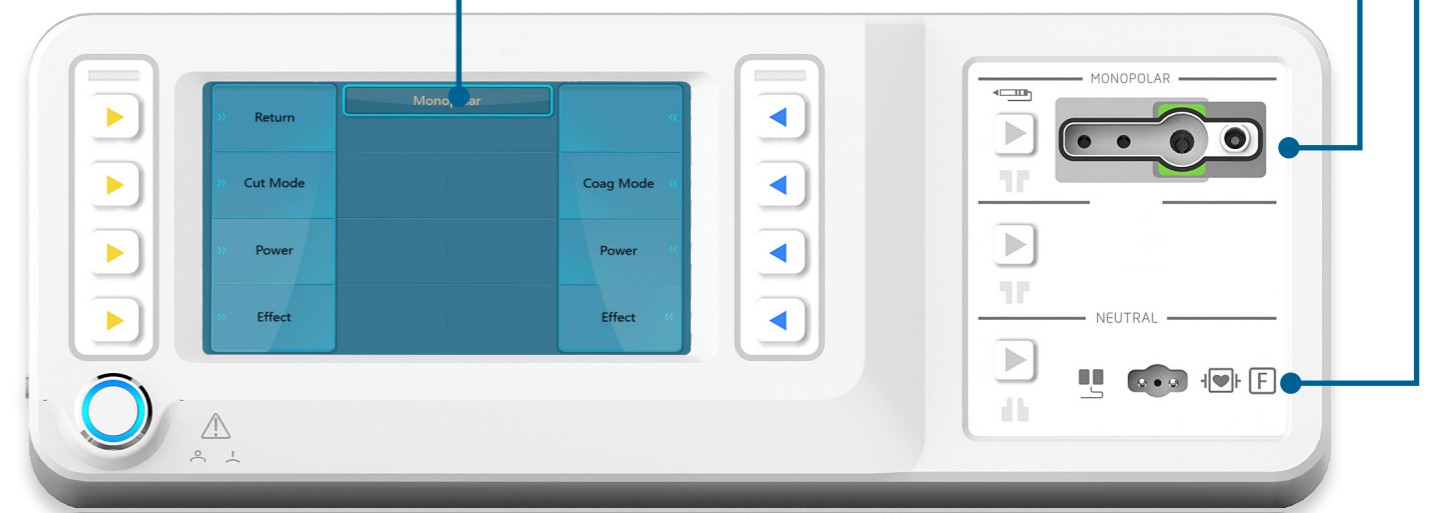
Plasma is released at a pulsing rate ensuring even distribution and minimized tissue damage.

### APS & PPS Enhanced

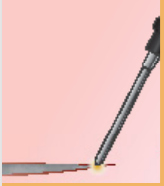
With advanced technology intergrated inside, the Argon Plasma System & Power Peak System provide easy initial cutting and constant argon output, allowing the electrode to start in contact with target tissue without cutting or coagulation delay.

**1-click** | **5+4**  
switch to  
customized programs | Cut / Coag  
Modes


Negative plate  
Mono-polar  
& Argon Probe




Versatile and precise tools for every purpose




**Auto Cut**  
Fully automatic mode with careful output control. A versatile mode for beginners and electrically conductive tissues.



**Dry Cut**  
Hemostasis effect at the cutting edge with voltage regulation and modulation waveforms.



**EndoI Cut**  
Automatic mode with fractioned cut and alternating cut/coag effect. For endoscopic needle(I) applications.



**EndoQ Cut**  
Automatic mode with fractioned cut and alternating cut/coag effect. For endoscopic snare (Q) applications.

**APC Enhancement**

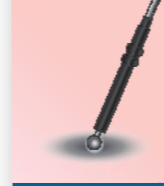
Use argon support to enhance performance in any mode and improve incision quality.

CUT MODES

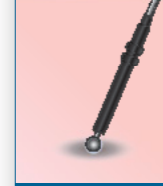
Comprehensive solution to hemostasis and devitalization

**APC Enhancement**

Use argon to enhance all non-contact APC coagulation.



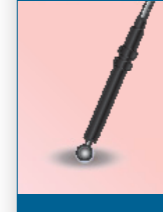
**Force Coag**  
Basic, fast and effective coagulation for devitalization or hemostasis with low thermal penetration and moderate carbonization.




**Soft Coag**  
Low intensity coagulation at large coverage with minimum carbonization and low adhesion risk.



**Spray Coag**  
Fast and effective non-contact coagulation with standard instrument or special probe.



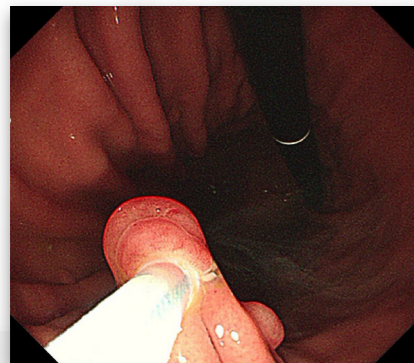
**Swift Coag**  
Fast effective coagulation which is very suitable for dissection with high hemostasis due to its limited tissue-cutting property.



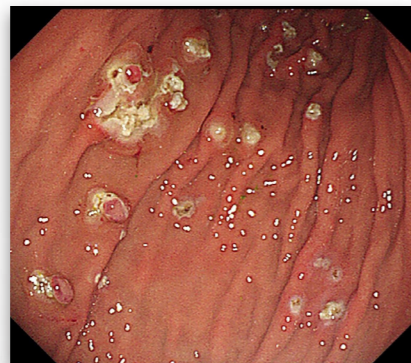
**Spray Coag/Spray Coag I & II**  
Efficient, non-contact coagulation at superficial layer with continuous or pulsed (I/II) spray and low thermal penetration.

COAG MODES

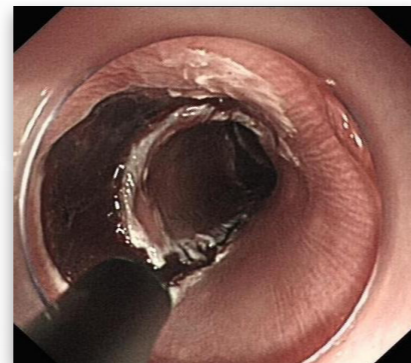
## Clinical Gallery



EMR



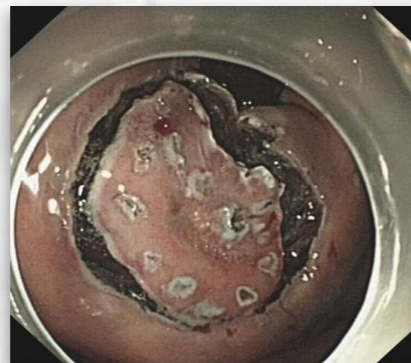
EMR



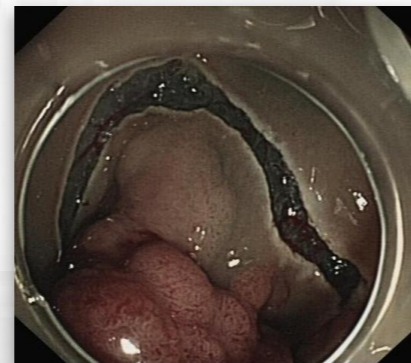
ESD



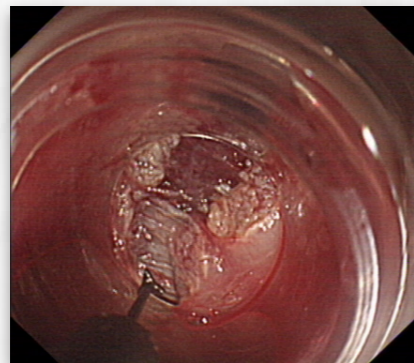
ESD



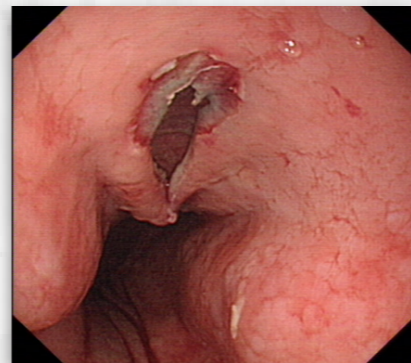
ESD



ESD



POEM



POEM



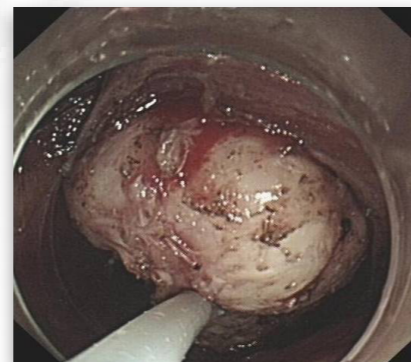
POEM



STER



STER



STER

## Mode Recommendation for Procedures

	ESD			POEM			EMR	ERCP	STER	
	Marking	Incision	Dissection	Incision	Dissection	Cut	Snare Cut	Cut	Incision	Dissection
Auto Cut										
Dry Cut								●		
EndoI Cut		●	●	●	●	●		●	●	●
EndoQ Cut		●	●	●	●	●	●		●	●
Force Coag	●		●		●					●
Soft Coag	●									
Swift Coag			●		●					●

# Technical Specifications

---

## Features

- Cut & Coagulation Modes: 9
  - Effect: 6
  - Argon Beam Coagulator
- 

## Power Output

- Maximum CUT output: 300W for 500 Ohm
  - Maximum COAG output: 200W
  - Frequency: 381KHZ
- 

## Argon

- Argon Input Pressure: 0.15 ~ 0.90Mpa
  - Argon Output Flow Rate: 0.1 ~ 9.0 L/min (Adjustable by 0.1L/min)
- 

## Dimensions and Weight

- 420 mm(W) \* 395 mm(D) \* 190 mm(H)
  - 10 Kg
- 

## Power Requirements

- Voltage (AC): 100-240 V
  - Frequency: 50/60Hz
  - Input 880VA
  - Fuse: F5AH250V \* 2
- 

## Optional Accessories

- Trolley
  - Argon Plasma Probe
- 

Sinomedik B.V., Zeewinde 3-11E, 9738 AM Groningen  
The Netherlands  
+31 (0) 502 110 354, [info@sinomedik.nl](mailto:info@sinomedik.nl), [www.sinomedik.nl](http://www.sinomedik.nl)  
KVK 52753220

